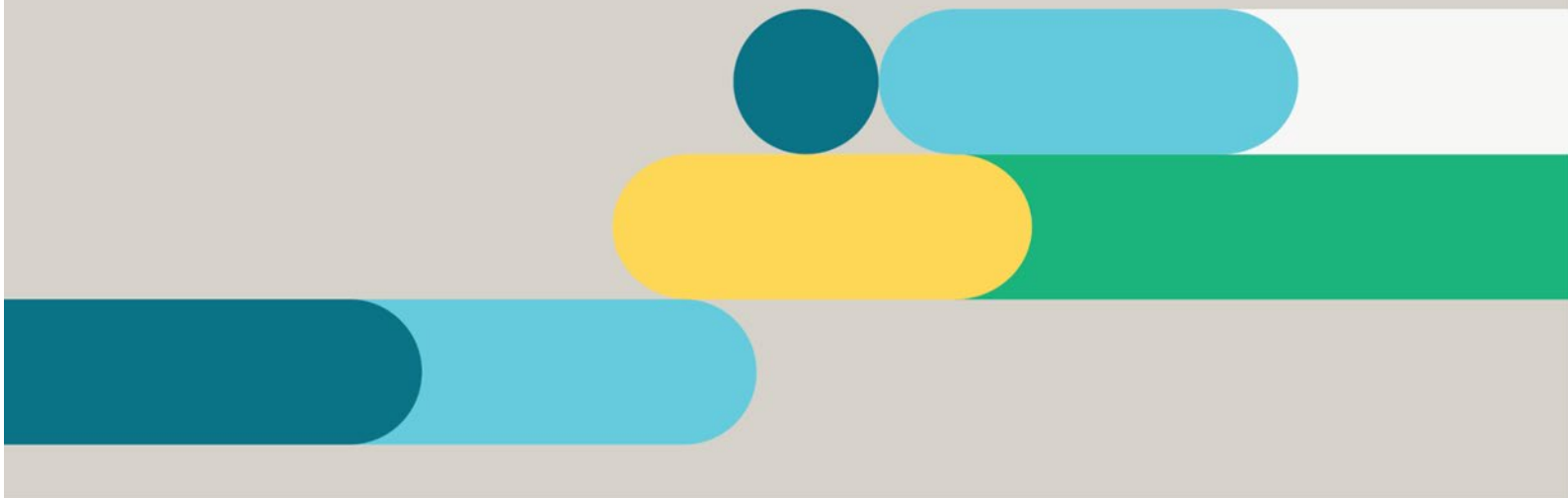


Inland Rail Community Grants Program Guideline



Revision History

REVISION	REVISION DATE	DESCRIPTION OF CHANGES
1	25/07/2024	Updated guideline for IR Community Grants and eligibility
<Add #>	<Insert date>	<Add #>

Due for Revision: 2 years from Approved Date (or as required)

Disclaimer: This document has been prepared by Inland Rail Pty Ltd (Inland Rail) or a related entity of Inland Rail and may not be relied on by any other party without Inland Rail's prior written consent. Use of this document shall be subject to the terms of the relevant contract with Inland Rail. Inland Rail, its related entities and employees shall have no liability to unauthorised users of the information for any loss, damage, cost or expense incurred or arising by reason of an unauthorised user using or relying upon the information in this document, whether caused by error, negligence, omission or misrepresentation in this document.

Copyright of this material is vested in Inland Rail, subject to the Copyright Act 1968. This material, including the Inland Rail logo, is copyright. None of this material may be reproduced, altered or transmitted in whole or in part without prior written permission from Inland Rail which must be directed to IR Director Business Services.

© Inland Rail Pty Ltd 2024

Table of Contents

1	Inland Rail Community Grants Program.....	3
2	Funding amounts	3
3	Eligibility requirements	3
4	Application process	3
5	Assessment process.....	4
6	Approval process	4
7	Advisement and funding process	4
8	Completion of funded projects, activities or events	5
9	Acknowledgement of Inland Rail, publicity and promotion.....	5
10	Inland Rail promotion.....	5
11	Eligible Local Government Areas Beveridge to Parkes	5

1 Inland Rail Community Grants Program

The Inland Rail's Community Grants Program supports community-initiated projects, events or activities, which:

- are one-off and short-term
- contribute to the community's wellbeing, prosperity and/or sustainability
- focus on one or more of Inland Rail's priority areas of culture, safety, environment, recreation and, entrepreneurship
- align with the core values of Inland Rail which are future thinking, active engagement, no harm, results
- are delivered into the eligible communities on the Inland Rail alignment between Beveridge (VIC) and Parkes (NSW).

2 Funding amounts

Eligible organisations can apply for amounts between \$1,000 and \$4,000. All applications will be submitted for consideration through the approval process detailed below.

3 Eligibility requirements

Eligibility includes:

- organisations and community groups which are not-for-profit, legal entities which hold a current ABN
- non-incorporated community groups and clubs must be auspiced by an eligible organisation which is nominated as the legal entity on the application form
- Aboriginal Land Councils and Traditional Owner Groups in the **Beveridge to Parkes** alignment area
- local government entities in the **Beveridge to Parkes** alignment area
- organisations and community groups must be located in the eligible local government areas (nominated by Inland Rail Pty Ltd) with priority likely to be given to communities nearest the Inland Rail alignment
- applications must be made in full, be signed by an office holder of the organisation or community group and submitted by the closing date for the relevant round
- projects must be one-off, short-term activities that relate to identified priority areas and contribute to their community's wellbeing, prosperity and sustainability.

What is not eligible:

- religious, political, private individual or business events and activities
- organisations or community groups not aligned with Inland Rail values or have direct links to tobacco, illegal drugs, negative impacts on health or associated with risk-taking activities
- requests for prize money, ongoing or retrospective activities, or to cover costs associated with making an application.

4 Application process

All requests for grants must be made to Inland Rail via the official application form, which is [available here](#).

The form seeks information about:

- The applicant and the organisation (its purpose, location, achievements in its community)
- Names of governance committee – President, Treasurer, Secretary
- How it supports one or more focus areas and Inland Rail’s values
- Project details and how it will benefit the community
- Date of project, event or activities
- Grant amount requested and how it will be used
- Plan for publicly recognising Inland Rail.

Attachments to the application will include:

- Evidence of legal entity, ABN and insurances
- Governance structure and committee members
- Quotes for spend relating to Inland Rail financial contribution, including costs associated with publicly acknowledging Inland Rail support (eg, plaques, signs, posters or other collateral etc)
- Other, as it supports the application

There will be four rounds per calendar year.

Round Opens	Round Closes
1 February	30 April
1 May	31 July
1 August	31 October
1 November	31 January

5 Assessment process

Application forms must be sent to IRcommunitygrants@inlandrail.com.au (a signed, scanned copy of the application form) by **6:00pm on the due date**.

Eligible applications will be forwarded to the Inland Rail Community Grants Program assessment committee.

6 Approval process

All decisions are at the discretion of Inland Rail. Funding decisions will be final and no negotiations will be entered into with applicants, however feedback will be made available on request.

7 Advisement and funding process

All applicants in each round will be advised of receipt of application (by email) and outcome of the round. Successful applicants will receive a letter from Inland Rail formally advising them of the success of their application, prior to receipt of funding.

Inland Rail may make public announcements of funding round outcomes each quarter, on the Inland Rail website, newsletter and other collateral etc.

8 Completion of funded projects, activities or events

Successful applicants will be required to notify Inland Rail of acquittal of funds as per the outlined in the advice letter and complete the relevant project, activity or event within 12 months of receipt of funding. Should the project, event or activities not proceed, organisations will be required to advise Inland Rail and negotiate either re-purposing or re-paying funds.

9 Acknowledgement of Inland Rail, publicity and promotion

Grant recipients will be expected to publicly acknowledge the support of Inland Rail.

Recipients may choose to publicly acknowledge Inland Rail's support through newsletters, media releases, social media, signage etc. with the wording "We acknowledge the support of Inland Rail for this event". Costs associated with this acknowledgement may be included in the funding request.

Recipients will also be asked to provide photographs where possible, including all necessary permissions, in writing.

10 Inland Rail promotion

Inland Rail retains the right to publicly promote funded projects, events and activities in internal and external publications, website, newsletters and social media.

11 Eligible Local Government Areas Beveridge to Parkes

Victoria	New South Wales
Mitchell Shire Council	Albury City Council
Strathbogie Shire Council	Greater Hume Shire Council
Benalla Rural City Council	City of Wagga Wagga
Rural City of Wangaratta	Junee Shire Council
Indigo Shire Council	Temora Shire Council
Regional City of Wodonga	Bland Shire Council
City of Greater Shepparton	Cootamundra-Gundagai Regional Council
	Hilltops Council
	Weddin Shire Council
	Forbes Shire Council
	Lockhart Shire Council
	Parkes Shire Council